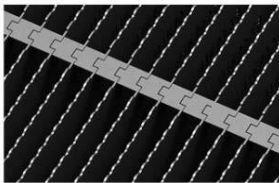


DLC Listed IP65 LED flood lights (NEW Generation)

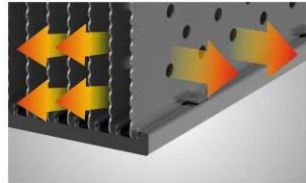
Advantages:

- ◆ UL/CUL(E352762), DLC listed
- ◆ High quality CREE chips
- ◆ Warranty period: 6 years
- ◆ Stainless steel parts
- ◆ Mean Well/other UL drivers
- ◆ Patented HDT technology
- ◆ Patented zipped-fins technology
- ◆ Tempered glass lens/93% transparency
- ◆ Voltage options: AC100-277V, 347~480V
- ◆ Powers: 10/20/30/50/66/73/100/120/150/200W
- ◆ Electroplate Aluminum/strong corrosion resistance
- ◆ Heat pipe-Riveting & massive fins cooling tech



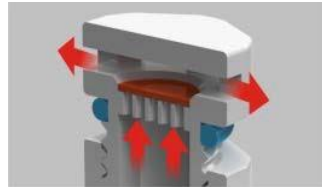
Patented zipped-fins technology

With zipped-fins technology, the convection airflow is evenly distributed in the cooling fins, optimizing the cooling effect.



3-Dimension heat dissipation

There are convection holes distributed on each fins allowing parallel direction airflow to maximum the cooling power.



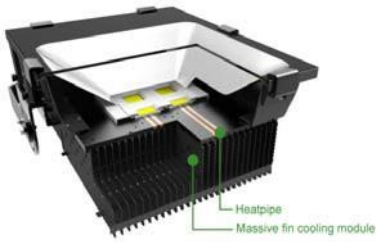
Respirator design

Anti-fogging and waterproof Respirator, balances the different pressure between the atmosphere and the shell.



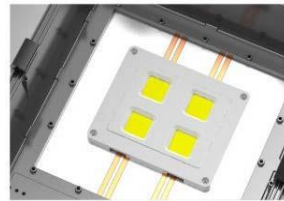
Protection rate: IP65

By using water-proof connector and silicon rubber sealing, the protection rate can achieve IP65, meeting the requirement for harsh, tough environment.



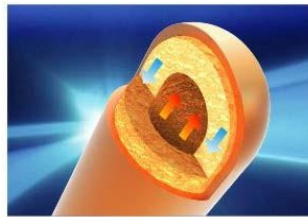
Heat pipe-riveting & Massive Fins

By using the Ø6mm heatpipe, the heat is quickly transferred to the cooling module of massive radiation fins, efficiently reducing the temperature of the LED chips and drivers, extending the lifespan.



Patented HDT technology

4×Ø6mm high efficient heatpipes contact the heat source directly, rapidly transfer the heat to the cooling module of massive radiation fins, maximizing the performance of cooling.



High performance heatpipe cooling

The heatpipe's principle is using the quick phases change of the liquid (medium) under vacuum condition which exchanges the heat, the heat transfer rate is superior to any metal.



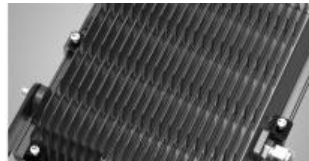
Tempered glass panel

4mm tempered glass panel safely protect the lighting source, and the transparent rate is high up to 93%.



Pure aluminium reflector

The reflector is made of pure aluminium (99.8%) which is anti-oxidation and unfading in colour, ensuring the reflection.



Electrophoretic paint coating

Processed by electrophoretic paint, measured by 200 hours salt spray test, the entire housing has excellent corrosion resistance



Wide angel for adjustment

With multiple adjustment points, the adjustment angel can be up to 180°



Stainless steel parts

Endurancing the corrosion of air, water, chemical acid, alkaline, salt and other materials, can be used in all kinds of harsh conditions for long term.

- **UL/CUL items:** all models are UL/CUL listed



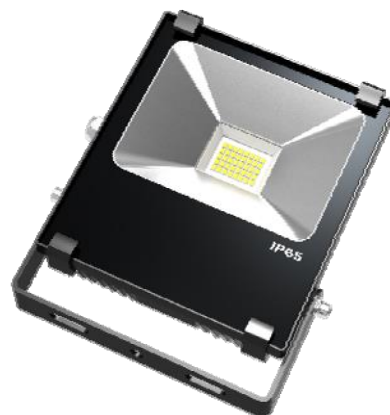
Model No.	NT-GI-FL20
Input Voltage:	AC100-277V (50~60Hz)
Input Power:	LED: 10W Total: 11W
Luminous Flux:	1,020 LM
LED Source:	High power CREE LEDs
Color Temp.:	3000K /4100K /5500K /6000K
View angle:	120°
Fixture Material:	Die-cast aluminium +Tempered glass
Fixture Surface:	Black
IP Rating:	IP65
Warranty:	6 years
Certifications:	UL/cUL
Testings:	LM79/LM80/IES available
Fixture info.:	5.11"(L) 5.11"(W) 1.85"(H), 0.8kg

Call For Pricing



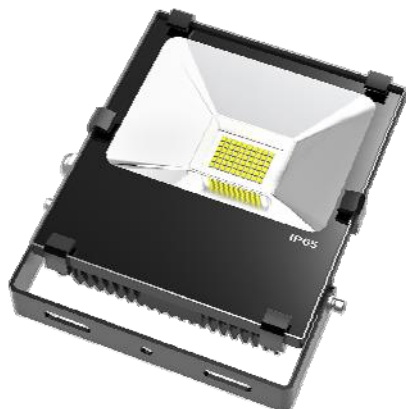
Spec.

Model No.	NT-GI-FL01
Input Voltage:	AC100-277V (50~60Hz)
Input Power:	LED: 20W Total: 22W
Luminous Flux:	2,030 LM
LED Source:	High power CREE LEDs
Color Temp.:	3000K /4100K /5500K /6000K
View Angle:	120°
Fixture Material:	Die-cast aluminium +Tempered glass
Fixture Surface:	Black
IP Rating:	IP65
Warranty:	6 years
Certifications:	UL/cUL
Testings:	LM79/LM80/IES available
Fixture info.:	6.69"(L) 5.9"(W) 2.28"(H),



Call For Pricing





Input Voltage:	AC100-277V (50~60Hz)
Input Power:	LED: 30W Total: 36W
Luminous Flux:	3,120 LM
LED Source:	High power CREE LEDs
Color Temp.:	3000K/4100K/5500K(DLC)/6000K
View Angle:	120°
Fixture Material:	Die-cast aluminium +Tempered glass
Fixture Surface:	Black
IP Rating:	IP65
Warranty:	6 years
Certifications:	UL/cUL, DLC listed
Testings:	LM79/LM80/IES available
Fixture info.:	7.48"(L) 6.69"(W) 2.29"(H), 2.5kg

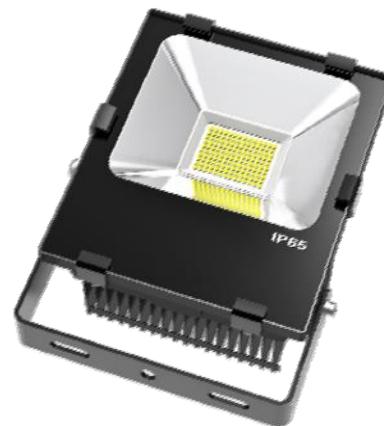
Call For Pricing

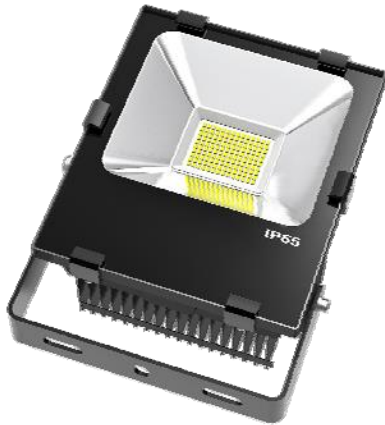


Spec.

Model No.	GI-FL22
Input Voltage:	AC100-277V (50~60Hz)
Input Power:	LED: 50W Total: 55W
Luminous Flux:	5,050 LM
LED Source:	High power CREE LEDs
Color Temp.:	3000K /4100K /5500K /6000K
View Angle:	120°
Fixture Material:	Die-cast aluminium +Tempered glass
Fixture Surface:	Black
IP Rating:	IP65
Warranty:	6 years
Certifications:	UL/cUL
Testings:	LM79/LM80/IES available
Fixture info.:	9.05"(L) 7.48"(W) 4.21"(H),

Call For Pricing





Model No.	NT-GI-FL22-1
Input Voltage:	AC100-277V (50~60Hz)
Input Power:	LED: 50W Total: 56W
Luminous Flux:	5,100 LM
LED Source:	High power CREE LEDs
Color Temp.:	3000K/4100K(DLC)/5500K(DLC)/6000K
View Angle:	120°
Fixture Material:	Die-cast aluminium +Tempered glass
Fixture Surface:	Black
IP Rating:	IP65
Warranty:	6 years
Certifications:	UL/cUL DLC listed
Testings:	LM79/LM80/IES available
Fixture info.:	9.05"(L) 7.48"(W) 4.21"(H),

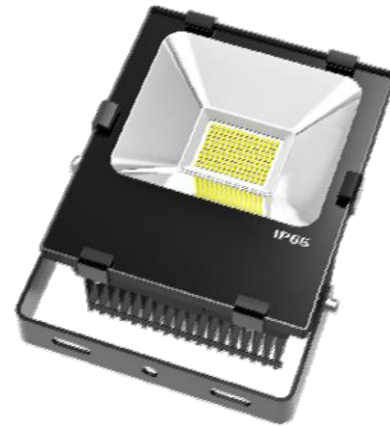
Call For Pricing



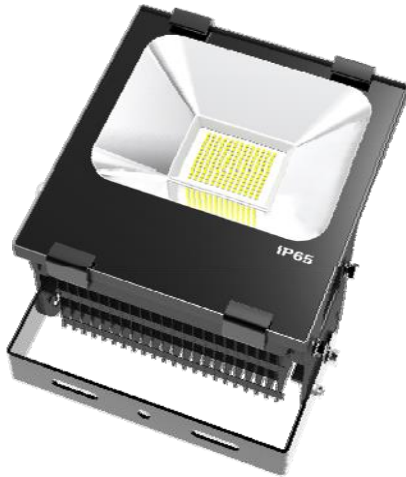
Spec.

Model No.	NT-GI-FL23
Input Voltage:	AC100-277V (50~60Hz)
Input Power:	LED: 66W Total: 70W
Luminous Flux:	6,650 LM
LED Source:	High power CREE LEDs
Color Temp.:	3000K /4100K /5500K /6000K
View Angle:	120°
Fixture Material:	Die-cast aluminium +Tempered glass
Fixture Surface:	Black
IP Rating:	IP65
Warranty:	6 years
Certifications:	UL/cUL
Testings:	LM79/LM80/IES available
Fixture info.:	9.05(L) 7.48"(W) 4.21"(H),

Call For Pricing



Spec.



Model No.	NT-GI-FL10
Input Voltage:	AC100-277V (50~60Hz)
Input Power:	LED: 100W Total: 105W
Luminous Flux:	10,020 LM
LED Source:	High power CREE LEDs
Color Temp.:	3000K /4100K /5500K /6000K
View Angle:	120°
Fixture Material:	Die-cast aluminium +Tempered glass
Fixture Surface:	Black
IP Rating:	IP65
Warranty:	6 years
Certifications:	UL/cUL
Testings:	LM79/LM80/IES available
Fixture info.:	11.02"(L) 10.2"(W) 5.9"(H), 5.8kg

Call For Pricing



Spec.

Model No.	NT-GI-FL11
Input Voltage:	AC100-277V (50~60Hz)
Input Power:	LED: 120W Total: 125W
Luminous Flux:	12,050 LM
LED Source:	High power CREE LEDs
Color Temp.:	3000K/4100K(DLC)/5500K(DLC)/6000K
View Angle:	120°
Fixture Material:	Die-cast aluminium +Tempered glass
Fixture Surface:	Black
IP Rating:	IP65
Warranty:	6 years
Certifications:	UL/cUL, DLC listed
Testings:	LM79/LM80/IES available
Fixture info.:	12.9"(L)12.2"(W) 7.48"(H),

Call For Pricing





Model No.	NT-GI-FL15
Input Voltage:	AC100-277V (50~60Hz)
Input Power:	LED: 150W Total: 155W
Luminous Flux:	15,080 LM
LED Source:	High power CREE LEDs
Color Temp.:	3000K/4100K(DLC)/5500K(DLC)/6000K
View Angle:	120°
Fixture Material:	Die-cast aluminium +Tempered glass
Fixture Surface:	Black
IP Rating:	IP65
Warranty:	6 years
Certifications:	UL/cUL DLC listed
Testings:	LM79/LM80/IES available
Fixture info.:	12.9"(L) 11.02"(W) 5.8"(H),

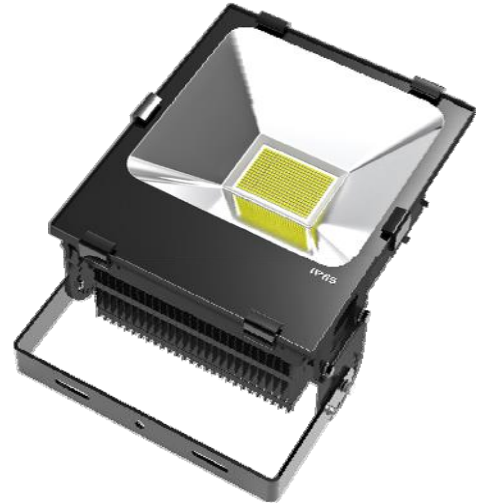
Call For Pricing

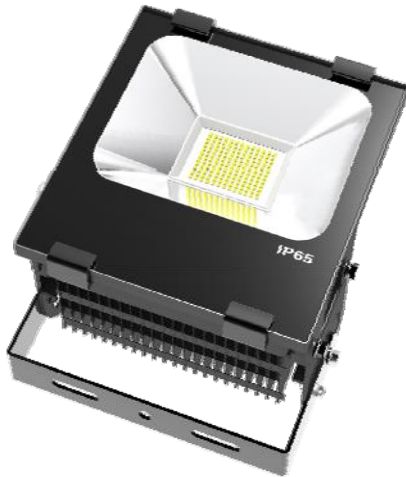


Spec.

Model No.	GI-FL16
Input Voltage:	AC100-277V (50~60Hz)
Input Power:	LED: 200W Total: 205W
Luminous Flux:	20,080 LM
LED Source:	High power CREE LEDs
Color Temp.:	3000K /4100K /5500K /6000K
View Angle:	120°
Fixture Material:	Die-cast aluminium +Tempered glass
Fixture Surface:	Black
IP Rating:	IP65
Warranty:	6 years
Certifications:	UL/cUL
Testings:	LM79/LM80/IES available
Fixture info.:	15.3"(L) 12.9"(W) 6.69"(H),

Call For Pricing





Model No.	NT-GI-FL06-HV
Input Voltage:	AC347-480V (50~60Hz)
Input Power:	LED: 73W Total: 75W
Luminous Flux:	7,300 LM
LED Source:	High power CREE LEDs
Color Temp.:	3000K/4100K(DLC)/5500K(DLC)/6000K
View Angle:	120°
Fixture Material:	Die-cast aluminium +Tempered glass
Fixture Surface:	Black
IP Rating:	IP65
Warranty:	6 years
Certifications:	UL/cUL DLC listed
Testings:	LM79/LM80/IES available
Fixture info.:	11.02"(L)10.2"(W) 5.9"(H),

Call For Pricing



Spec.

Model No.	NT-GI-FL10-HV
Input Voltage:	AC347-480V (50~60Hz)
Input Power:	LED: 100W Total: 105W
Luminous Flux:	10,300 LM
LED Source:	High power CREE LEDs
Color Temp.:	3000K/4100K(DLC)/5500K(DLC)/6000K
View Angle:	120°
Fixture Material:	Die-cast aluminium +Tempered glass
Fixture Surface:	Black
IP Rating:	IP65
Warranty:	6 years
Certifications:	UL/cUL DLC listed
Testings:	LM79/LM80/IES available
Fixture info.:	11.02"(L) 10.2"(W) 5.9"(H),



Call For Pricing





Model No.	NT-GI-FL15-HV
Input Voltage:	AC347-480V (50~60Hz)
Input Power:	LED: 150W Total: 155W
Luminous Flux:	15,400 LM
LED Source:	High power CREE LEDs
Color Temp.:	3000K/4100K/5500K/6000K
View Angle:	120°
Fixture Material:	Die-cast aluminium +Tempered glass
Fixture Surface:	Black
IP Rating:	IP65
Warranty:	6 years
Certifications:	UL/cUL
Testings:	LM79/LM80/IES available
Fixture info.:	15.3"(L) 12.9"(W) 6.69"(H),

Call For Pricing

